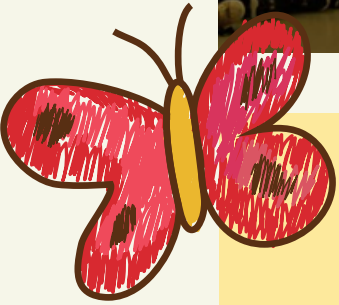


# Welcome to Grant Elementary



## Open House

**Tuesday,  
August 30th  
from 3:00-5:00**

No appointment  
needed.

Come to meet  
your teacher and  
drop off school  
supplies.

## School Hours

**1ST BELL - 8:30**

**SCHOOL STARTS - 8:45**

-----  
**END OF DAY - 3:30**

\*Notice this has  
changed since last  
year





## 4 YEAR OLD KINDERGARTEN

4K AM SESSION  
8:45-11:20

4K PM SESSION  
12:55-3:30



## BREAKFAST & LUNCH

BREAKFAST IS SERVED  
AT 8:30AM

PRICES:  
BREAKFAST - \$1.50  
LUNCH - \$2.15



*Drop off - Students may be dropped off starting at 8:30am in the west parking lot. Please pull into the lot off of 85th, drop off your child in the unloading zone, and exit onto WW. \*Buses will also be unloading on 85th - please be mindful of staff stopping the drop off line briefly to walk bus students safely to the school building.*



# End of Day Pick-Up



## 3:30 Pick-Up Procedure

1. Turn into the parking lot from 85th. Pull all the way through the parking lot forming two car lines, stopping just before turning onto WW. (Parking lot will open at 3:20 to pull in)
2. The following cars will fill the lot, two lanes. Pull as far forward as possible. Put your vehicle in park.
3. The bell will ring at 3:30. Students will begin to file out of the building and will be led through the lot by their teachers. When students come out, please stand just outside of your vehicle to wave your child to your vehicle. No vehicles will be allowed to move while students load.
4. Once all students have loaded into their vehicles, the lines (one line at a time) will filter out of the parking lot onto WW.

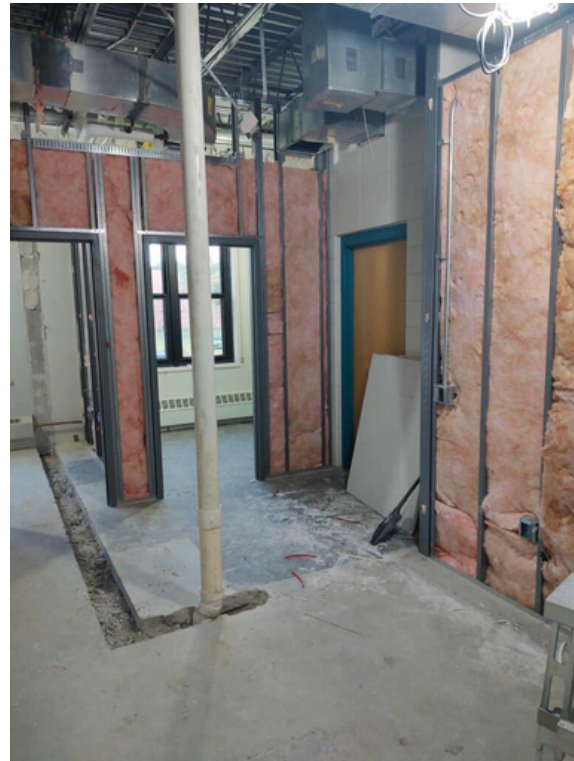
\*Please note, parents/guardians will not be allowed into the school building for drop off or pick-up.



# We've Moved!

DUE TO CONSTRUCTION

THE MAIN OFFICE WILL BE LOCATED AT THE WEST ENTRANCE OF THE BUILDING UNTIL OUR NEW SPACE IS COMPLETED. THE NEW OFFICE IS SCHEDULED TO BE COMPLETED IN NOVEMBER 2022.



GRANT  
GRIZZLY  
DAY @



*Dairy Queen of Wisconsin Rapids has invited all of our Grant Grizzly students and their families to enjoy a tasty treat on Tuesday, August 30th! A portion of all proceeds will go to the Grant School PAG. Please make sure to visit our local Dairy Queen before or after our Open House (3pm-5pm) with your family and friends to celebrate the start of the school year! Thank you Dairy Queen for supporting us!! We appreciate you!!*